

SWITCHES MINIATURE SNAP ACTION

SPECIFICATIONS:

Current Rating:	16A @ 125/250V AC
Initial Contact Resistance:	15 Meg ohm (Max.)
Insulation Resistance:	500V DC 1000 Meg ohm (Min.)
Dielectric Strength:	1000V AC for 1 Minute
Contact Material:	Silver
Terminal Material:	Brass - Silver Plate
Terminal Type:	.187" Quick Connect

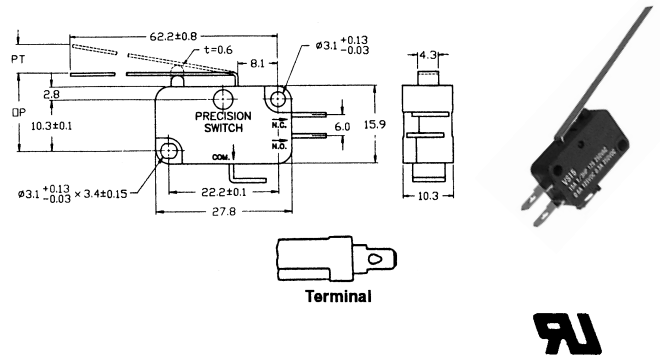
Part No.	Type	Action	Actuator
30-2040	SPDT	Snap Action Momentary	Long Lever
30-18205*	SPDT	Snap Action Momentary	Long Lever

* 30-18205 Rated 10A @ 125V/250VAC with .250" Quick Connect Terminal

SPECIFICATIONS:

Terminal: Quick Connect	OT Min.: 3mm
OF Max.: 60g	MD Max.: 2.2mm
RF Min.: 7g	OP: 15.2 ± 2.6mm
PT Max.: 7.6mm	

MINIATURE SNAP ACTION SWITCHES with LONG LEVER



SPECIFICATIONS:

Current Rating:	16A @ 125/250V AC
Initial Contact Resistance:	15 Meg ohm (Max.)
Insulation Resistance:	500V DC 1000 Meg ohm (Min.)
Dielectric Strength:	1000V AC for 1 Minute
Contact Material:	Silver
Terminal Material:	Brass - Silver Plate
Terminal Type:	.187" Quick Connect

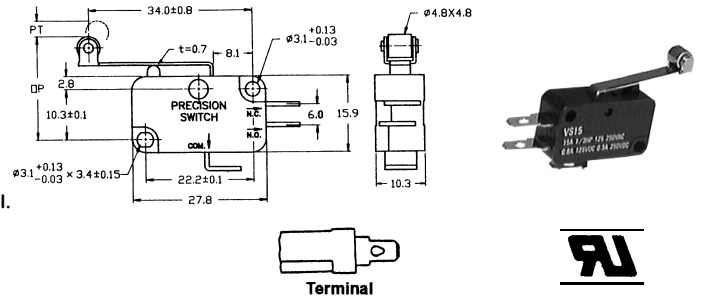
Part No.	Type	Action	Actuator
30-2060	SPDT	Snap Action Momentary	Roller Lever
30-18236*	SPDT	Snap Action Momentary	Roller Lever

* 30-18236 Rated 10A @ 125V/250VAC with .250" Quick Connect Terminal.

SPECIFICATIONS:

Terminal: Quick Connect	OT Min.: 1.6mm
OF Max.: 115g	MD Max.: 1.2mm
RF Min.: 14g	OP: 20.7 ± 1.2mm
PT Max.: 3.3mm	

MINIATURE SNAP ACTION SWITCHES with ROLLER LEVER



SPECIFICATIONS:

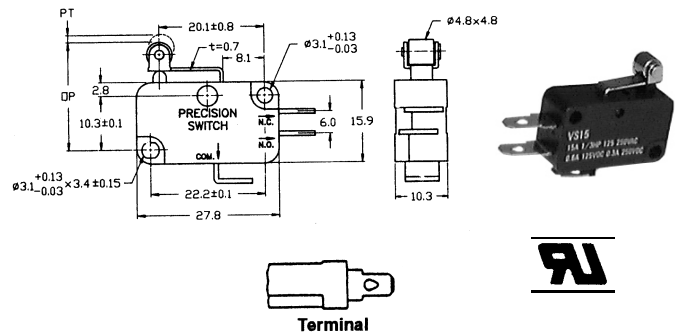
Current Rating:	16A @ 125/250V AC
Initial Contact Resistance:	15 Meg ohm (Max.)
Insulation Resistance:	500V DC 1000 Meg ohm (Min.)
Dielectric Strength:	1000V AC for 1 Minute
Contact Material:	Silver
Terminal Material:	Brass - Silver Plate
Terminal Type:	.187" Quick Connect

Part No.	Type	Action	Actuator
30-2080	SPDT	Snap Action Momentary	Short Roller Lever

SPECIFICATIONS:

Terminal: Quick Connect	OT Min.: 0.6mm
OF Max.: 230g	MD Max.: 0.5mm
RF Min.: 45g	OP: 20.7 ± 0.6mm
PT Max.: 1.5mm	

MINIATURE SNAP ACTION SWITCH with SHORT ROLLER LEVER



SPECIFICATIONS:

Current Rating:	10A @ 125/250V AC
Initial Contact Resistance:	15 Meg ohm (Max.)
Insulation Resistance:	100 Meg ohm (Min.) at 500VDC
Dielectric Strength:	1000V AC 50/60 Hz for 1 Minute
Contact Material:	Silver
Terminal Material:	Brass - Silver Plate
Terminal Type:	.250" Quick Connect

Part No.	Type	Action	Actuator
30-18203	SPDT	Snap Action Momentary	Simulated Roller

SPECIFICATIONS:

OF Max.: 115g	OT Min.: 1.6mm
RF Min.: 14g	MD Max.: 1.2mm
PT Max.: 3.7mm	OP: 18.7 ± 1.2mm

MINIATURE SNAP ACTION SWITCH with SIMULATED ROLLER

